

# WASP PFS Ltd

A Separ UK Company (ISO9001:2008)

3 Kingley Park, Station Road, Kings Langley, Herts, WD4 8GW

www.wasp-pfs.com

Tel: +44(0)1923 606600

sales@wasp-pfs.com

Fax: +44(0)1923 267463



## WASP fuel filters and strainers catalogue

Rev 1103



# WASP PFS Ltd

A Separ UK Company (ISO9001:2008)

3 Kingley Park, Station Road, Kings Langley, Herts, WD4 8GW

www.wasp-pfs.com Tel: +44(0)1923 606600

sales@wasp-pfs.com Fax: +44(0)1923 267463



The information contained in this catalogue is correct to the best of our knowledge; however always check with WASP PFS Ltd/Separ UK for the precise data relating to any given product.

Occasionally products are updated or have subtle re-designs. Given we produce a catalogue ever year to eighteen months; it is not always possible to include these changes. Speaking to WASP PFS Ltd/Separ UK is always the easiest way to ensure you have the latest information. Alternately you can visit our web site at [www.wasp-pfs.com](http://www.wasp-pfs.com)

Information in this document is for reference only, E&OE.

All sizes and weights are approximate.

Note: The manufacturer reserves the right to change or amend specifications without notice.

# WASP PFS Ltd

A Separ UK Company (ISO9001:2008)

3 Kingley Park, Station Road, Kings Langley, Herts, WD4 8GW

www.wasp-pfs.com      Tel: +44(0)1923 606600

sales@wasp-pfs.com      Fax: +44(0)1923 267463



## Contents

WASP filter range overview .....	5
W-4 Range .....	6
W-8 Range .....	8
W-15 and Fuel Stop Range .....	10
W-20 Range .....	12
W-30 Range .....	14
W-7010x Range.....	16
W-7050x Range.....	18
W-7070x Range.....	20
W-51000 Self Cleaning Range.....	22
WASP Spin-On Range of Fuel Filters / Water Separators .....	24
Ordering procedure .....	27

# WASP PFS Ltd

A Separ UK Company (ISO9001:2008)

3 Kingley Park, Station Road, Kings Langley, Herts, WD4 8GW

www.wasp-pfs.com

Tel: +44(0)1923 606600

sales@wasp-pfs.com

Fax: +44(0)1923 267463



WASP PFS Ltd / Separ UK are based in custom built offices in Kings Langley, Hertfordshire; located between Watford and Hemel Hempstead. We are minutes away from the M25 junction 20.

From J20 of the M25, follow the signs for Kings Langley (A4251). After ¼ mile Turn left at the roundabout into 'Home Park Mill Link Road' and follow to the end At the end of the road, turn left into Station Road Kingley Park is situated about ¼ along that road, opposite the old Ovaltine Factory



## WASP filter range overview

# Water And Sediment Protection

WASP filters offer cost effective primary filtration equipment for Marine, Heating oil, Industrial and Transport applications.

Our precision built filters have been tried and tested for over 15 years, and offer reliable service.

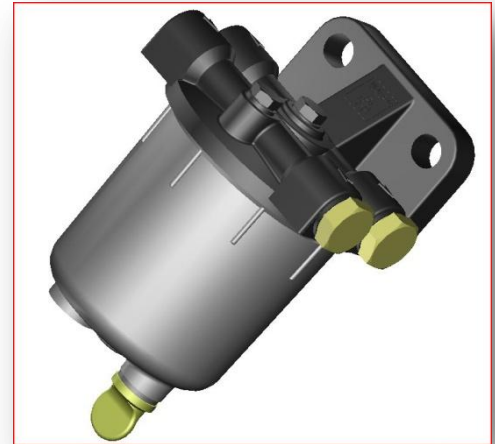
The simplicity of operation is the key to the success of these self-clean filters with only two or three turns of the hand wheel being sufficient to clean the filter surface without interruption to the fluid flow or machinery operation.

Flow rates range from 10 to 24,000 litres/hour with options of 100, 300 & 600 microns and 250, 500 or 750 microns on the larger filters. Maximum working pressures are 4 bar and 15 bar depending on the model selection.

Housings are in aluminium (cast iron is an option with some models). The filter element discs are carbon steel, again the option of stainless steel element discs on the larger models.

The precision built central element comprises of a circular disc stack, each disc separated by a smaller inner star disc of 100, 300 or 600 microns, which sets the micron rating. On the outer edge but penetrating a short way into the stack, is a fixed oblong shaped plough disc. When the disc stack is turned the plough removes any impurities that have built up on the outside and between each disc.

Impurities are periodically removed via a drain plug or valve at the base of the filter housing. The hand wheel can be turned manually or by an optional electric motor with torque limiter and timer.



Model	Approx Flow	Port sizes	Micron rating
W-4	40 lit/hr	¼", ⅜"	15mic, 60mic, 100mic
W-8	60 lit/hr	¼", ⅜", ½"	15mic, 60mic, 100mic
W-15	240 lit/hr	½"x20UNF, M14	15mic, 15 mic extended, 100mic, fuel-stop
W-20	200 lit/hr	⅜"	15mic or 150mic
W-30	100 lit/hr	¼", ⅜", ½"	15mic, 60mic, 100mic, 300 mic
W-7010x	3000 lit/hr	½", ¾", 1"	60mic, 100mic, 300 mic
W-7050x	8000 lit/hr	1", 1 ¼", 1 ½", 2"	60mic, 100mic, 300 mic
W-7070x	20000 lit/hr	2"	60mic, 100mic, 300 mic
W-51000	20000 lit/hr	2" (others available on request)	250mic, 500mic, 750mic, 1000mic (1mm)
Spin on range	6000 lit/hr	¾" and 1 ¼"	3mic, 10mic, 12mic, 30mic and water absorption

# WASP PFS Ltd

A Separ UK Company (ISO9001:2008)

3 Kingley Park, Station Road, Kings Langley, Herts, WD4 8GW

www.wasp-pfs.com

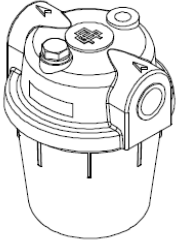
Tel: +44(0)1923 606600

sales@wasp-pfs.com

Fax: +44(0)1923 267463



## W-4 Range



WASP W-4 is a cost effective range of primary filtration equipment for marine, heating, industrial and transport applications.

The WASP W-4 Fuel Filters offer a new cost effective range of primary filtration equipment for marine, heating, industrial and transport applications. Available with either a clear plastic or metal bowl. All the models are made from aluminium (the W-4ST has a transparent plastic bowl), and are available with an optional mounting bracket.

### Features

- 36 litres per hour flow rate at minimal pressure drop (see chart)
- Plastic or metal bowls
- Lightweight
- Compact
- Choice of separators, paper elements or long life stainless steel
- LM6 grade aluminium filter heads with reversible stainless steel bracket & bolts
- Powder coated aluminium filter heads for corrosion prevention & long service life

### Technical Specification

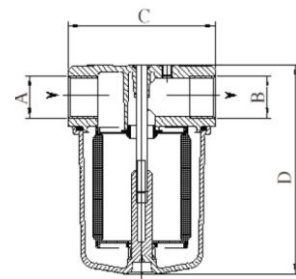
Maximum operating pressure 2bar

Max operating temp (metal bowl) 90°C

Max operating temp (plastic bowl) 50°C

Compatible with diesel and heavy oil

Dimensions	
A	¼" BSP or 3/8" BSP
B	¼" BSP or 3/8" BSP
C	61mm
D	75mm



### Options (on request)

- Wall mounting bracket
- Bleed plug
- Viton seals

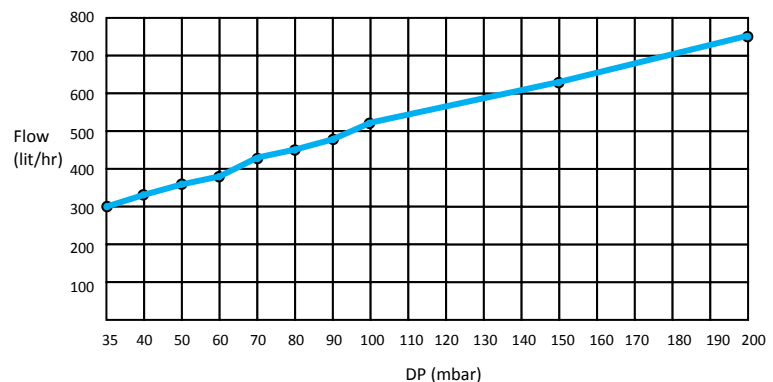


Chart for diesel (1.5°C) with clean element

### Assembly, maintenance and cleaning

Carefully follow the flow direction shown by an arrow on the filter. The filter can be installed in any position although it is recommended to fit it vertically with the bowl pointing downwards in order to facilitate the separation of the water traces and the deposit of the filtered impurities.

Cleaning the filter is carried out by unscrewing the bowl. Carefully wash the filtering element with clean diesel, gas-oil or gasoline. Remount the unit and check that the seals are integral and well placed. Paper elements should be replaced as they cannot be reused.

# WASP PFS Ltd

A Separ UK Company (ISO9001:2008)

3 Kingley Park, Station Road, Kings Langley, Herts, WD4 8GW

www.wasp-pfs.com

Tel: +44(0)1923 606600

sales@wasp-pfs.com

Fax: +44(0)1923 267463



## W-4 range



1/4" or 3/8" BSP ports  
Aluminium head  
Aluminium or clear plastic bowl  
Sold in pack sizes of 50 pieces

### Filtration (micron)

### Details

W-4STM/0015P	15mic paper (pleated)	1/4" Ports, Metal bowl
W-4STM/006	60mic stainless steel (pleated)	1/4" Ports, Metal bowl
W-4STM/006L	60mic stainless steel (straight)	1/4" Ports, Metal bowl
W-4STM/01	100mic stainless steel (pleated)	1/4" Ports, Metal bowl
W-4STM/01L	100mic stainless steel (straight)	1/4" Ports, Metal bowl
W-4ST/0015P	15mic paper (pleated)	1/4" Ports, Clear bowl
W-4ST/006	60mic stainless steel (pleated)	1/4" Ports, Clear bowl
W-4ST/006L	60mic stainless steel (straight)	1/4" Ports, Clear bowl
W-4ST/01	100mic stainless steel (pleated)	1/4" Ports, Clear bowl
W-4ST/01L	100mic stainless steel (straight)	1/4" Ports, Clear bowl
W-4STM-38/0015P	15mic paper (pleated)	3/8" Ports, Metal bowl
W-4STM-38/006	60mic stainless steel (pleated)	3/8" Ports, Metal bowl
W-4STM-38/006L	60mic stainless steel (straight)	3/8" Ports, Metal bowl
W-4STM-38/01	100mic stainless steel (pleated)	3/8" Ports, Metal bowl
W-4STM-38/01L	100mic stainless steel (straight)	3/8" Ports, Metal bowl
W-4ST-38/0015P	15mic paper (pleated)	3/8" Ports, Clear bowl
W-4ST-38/006	60mic stainless steel (pleated)	3/8" Ports, Clear bowl
W-4ST-38/006L	60mic stainless steel (straight)	3/8" Ports, Clear bowl
W-4ST-38/01	100mic stainless steel (pleated)	3/8" Ports, Clear bowl
W-4ST-38/01L	100mic stainless steel (straight)	3/8" Ports, Clear bowl

### W-4 range options

W-70401	W-4 range mounting bracket and screw
W-60450/0015P	Replacement 15 mic paper element
W-60450/006	Replacement 60 mic pleated stainless steel element
W-60450/006L	Replacement 60 mic straight stainless steel element
W-60450/01	Replacement 100 mic pleated stainless steel element
W-60450/006L	Replacement 60 mic straight stainless steel element
W-60450/01	Replacement 100 mic pleated stainless steel element
W-60450/01L	Replacement 100 mic straight stainless steel element
W-3195	NBR gasket kit for 15 micron paper elements
W-3198	NBR gasket kit for straight stainless elements
W-3198V	Viton gasket kit for straight stainless elements
W-3199	NBR gasket kit for pleated stainless elements
W-3199V	Viton gasket kit for pleated stainless elements



# WASP PFS Ltd

A Separ UK Company (ISO9001:2008)

3 Kingley Park, Station Road, Kings Langley, Herts, WD4 8GW

www.wasp-pfs.com

Tel: +44(0)1923 606600

sales@wasp-pfs.com

Fax: +44(0)1923 267463



## W-8 Range

WASP W-8 is a step up from the basic W-4 range; but again is designed for use in marine, heating, industrial and transport applications.

The WASP W-8 Fuel Filters offer a cost effective range of primary filtration. Available with either a clear plastic or metal bowl. All the models are made from aluminium (the W-8ST has a transparent plastic bowl), and are available with an optional mounting bracket.

### Features

- Plastic or metal bowls
- Lightweight
- Compact
- Choice of separators, paper elements or long life stainless steel
- LM6 grade aluminium filter heads with reversible stainless steel bracket & bolts
- Powder coated aluminium filter heads for corrosion prevention & long service life

### Technical Specification

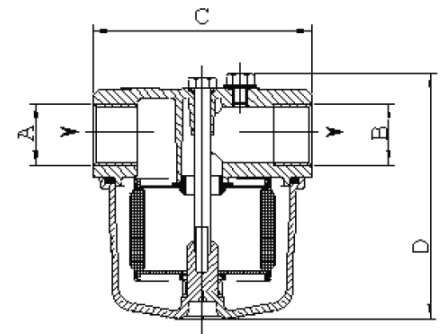
Maximum operating pressure 2bar

Max operating temp (metal bowl) 90°C

Max operating temp (plastic bowl) 50°C

Compatible with diesel and heavy oil

Dimensions	
A	¼", 3/8" or ½" BSP
B	¼", 3/8" or ½" BSP
C	81mm
D	89mm (max)



### Options (on request)

- Wall mounting bracket
- Bleed plug
- Viton seals

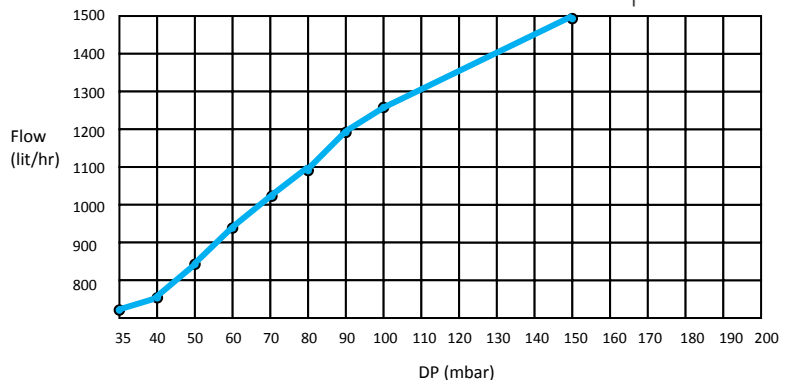


Chart for diesel (1.5°E) with clean element

### Assembly, maintenance and cleaning

Carefully follow the flow direction shown by an arrow on the filter. The filter can be installed in any position although it is recommended to fit it vertically with the bowl pointing downwards in order to facilitate the separation of the water traces and the deposit of the filtered impurities.

Cleaning the filter is carried out by unscrewing the bowl. Carefully wash the filtering element with clean diesel, gas-oil or gasoline. Remount the unit and check that the seals are integral and well placed. Paper elements should be replaced as they cannot be reused.

# WASP PFS Ltd

A Separ UK Company (ISO9001:2008)

3 Kingley Park, Station Road, Kings Langley, Herts, WD4 8GW

www.wasp-pfs.com

Tel: +44(0)1923 606600

sales@wasp-pfs.com

Fax: +44(0)1923 267463



## W-8 range

1/4", 3/8" or 1/2" BSP ports,  
Aluminium head  
Aluminium or clear plastic bowl  
Sold in pack sizes of 20 pieces



### Filtration (micron)

### Details

W-8STM-14/0015P	15mic paper	1/4" Ports, Metal bowl
W-8STM-14/006	60mic stainless steel	1/4" Ports, Metal bowl
W-8STM-14/01	100mic stainless steel	1/4" Ports, Metal bowl
W-8ST-14/0015P	15mic paper	1/4" Ports, Clear bowl
W-8ST-14/006	60mic stainless steel	1/4" Ports, Clear bowl
W-8ST-14/01	100mic stainless steel	1/4" Ports, Clear bowl
W-8STM-38/0015P	15mic paper	3/8" Ports, Metal bowl
W-8STM-38/006	60mic stainless steel	3/8" Ports, Metal bowl
W-8STM-38/01	100mic stainless steel	3/8" Ports, Metal bowl
W-8ST-38/0015P	15mic paper	3/8" Ports, Clear bowl
W-8ST-38/006	60mic stainless steel	3/8" Ports, Clear bowl
W-8ST-38/01	100mic stainless steel	3/8" Ports, Clear bowl
W-8STM-12/0015P	15mic paper	1/2" Ports, Metal bowl
W-8STM-12/006	60mic stainless steel	1/2" Ports, Metal bowl
W-8STM-12/01	100mic stainless steel	1/2" Ports, Metal bowl
W-8ST-12/0015P	15mic paper	1/2" Ports, Clear bowl
W-8ST-12/006	60mic stainless steel	1/2" Ports, Clear bowl
W-8ST-12/01	100mic stainless steel	1/2" Ports, Clear bowl

### W-8 range options

W-70358	W-8 range mounting bracket and screw
W-60300/0015P	Replacement 15 mic paper element
W-603000/006	Replacement 60 mic pleated stainless steel element
W-60300/01	Replacement 100 mic pleated stainless steel element
W-3204	Seal kit
W-3024V	Viton seal kit



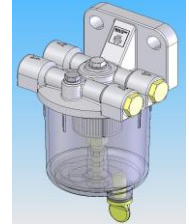
# WASP PFS Ltd

A Separ UK Company (ISO9001:2008)  
 3 Kingley Park, Station Road, Kings Langley, Herts, WD4 8GW  
 www.wasp-pfs.com Tel: +44(0)1923 606600  
 sales@wasp-pfs.com Fax: +44(0)1923 267463



## W-15 and Fuel Stop Range

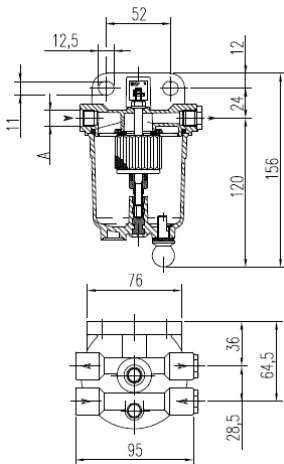
Fuel filter/water separators for heating, transport and agricultural applications. Please note, for marine use we recommend the metal bowl version.



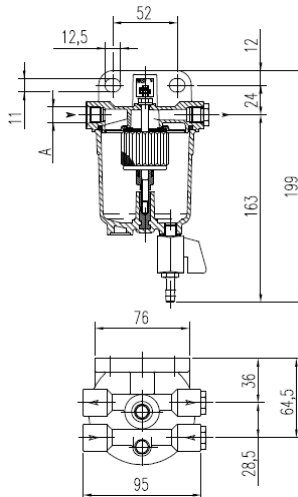
- Fuel flow up to 4 litres per minute (240 lit/hr)
- Filtration to 15um (paper) or 100um (stainless steel)
- Integrated mounting bracket
- M14x1.5 or ½"x20UNF ports
- Water separation to 98.8%
- Pressure tested to 2 bar
- 4 ports in head (1 in 1 out on each side)

Box quantity (drain plug): 48 pcs per box  
 Box quantity (drain tap): 32 pcs per box  
 Environment temperature range: -20 +120 °C  
 Element surface area: 50 cm<sup>2</sup>  
 Aluminium die-cast filter head/ bracket  
 Transparent (Trogamid T5000) or aluminium bowl.

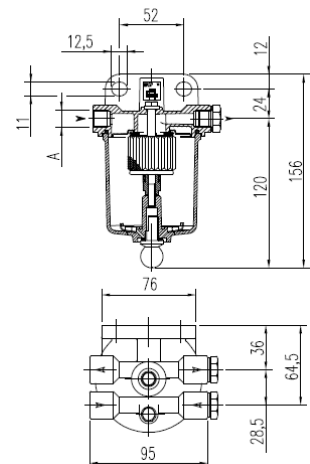
**W-15ST/12** ½"x20 UNF ports  
**W-15ST/14** M14 ports  
**W-15FS** ½"x20 or M14 ports  
 Transparent bowl, drain plug



**W-15ST/12/xxxB** ½"x20 UNF ports  
**W-15ST/14/xxxB** M14 ports  
 Transparent bowl, drain tap

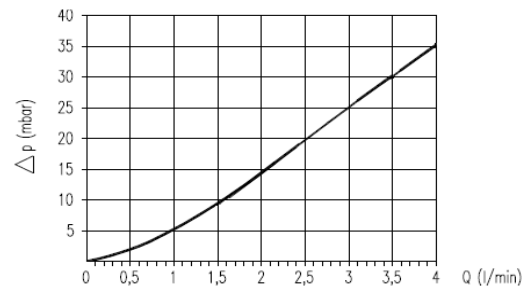


**W-15STM/14** M14 ports  
 Metal bowl, drain plug



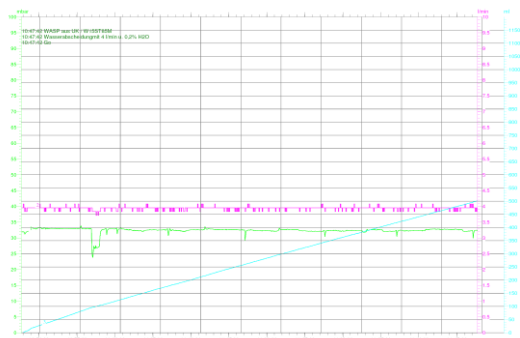
The WASP W-15 range has been tested at flow rates up to 4 lit/min (240 lit/hr). The differential pressure chart (to the right) shows how the unit's restriction changes as the flow rate increases.

Please note, this chart assumes clean diesel and a clean element



Water separation tests independently carried out in Germany to DIN ISO 4020 standard.

Test model: W-15ST/14/01  
 Element: 100um stainless steel  
 Ports: M14 x 1.5  
 Water separation at 2.5 lit/min: 98.9%  
 Water separation at 4.0 lit/min: 96.3%



# WASP PFS Ltd

A Separ UK Company (ISO9001:2008)

3 Kingley Park, Station Road, Kings Langley, Herts, WD4 8GW

www.wasp-pfs.com

Tel: +44(0)1923 606600

sales@wasp-pfs.com

Fax: +44(0)1923 267463



## W-15 range

Water Separator / Fuel Filter Range

2 ports on each side of filter head. Integrated bracket

½" x 20UNF or M14 BSP ports, Aluminium head, aluminium or clear plastic bowl.

Up to 240 litres per hour flow

Sold in pack sizes of 48 (drain plug version) or 32 pieces (ball valve versions)



### Filtration (micron)

### Details

W-15ST/12/0015	15 micron paper	½" x 20UNF ports, clear bowl, drain plug
W-15ST/12/01	100 micron stainless steel	½" x 20UNF ports, clear bowl, drain plug
W-15ST/12/0015B	15 micron paper	½" x 20UNF ports, clear bowl, ball valve
W-15ST/12/01B	100 micron stainless steel	½" x 20UNF ports, clear bowl, ball valve
W-15ST/14/0015	15 micron paper	M14 ports, clear bowl, drain plug
W-15ST/14/0015EX	15 micron extended height paper	M14 ports, clear bowl, drain plug
W-15ST/14/01	100 micron stainless steel	M14 ports, clear bowl, drain plug
W-15ST/14/0015B	15 micron paper	M14 ports, clear bowl, ball valve
W-15ST/14/01B	100 micron stainless steel	M14 ports, clear bowl, ball valve
W-15STM/14/0015	15 micron paper	M14 ports, metal bowl, drain plug
W-15STM/14/01	100 micron stainless steel	M14 ports, metal bowl, drain plug
W-15FS/12	Fuel stop filter	½" x 20UNF ports, clear bowl, drain plug
W-15FS/14	Fuel stop filter	M14, clear bowl, drain plug

### W-15 range options

W60450/0015P	Standard replacement 15 mic paper element
W60200/0015P	Replacement extended paper element (15 micron) for 0015EX model only
W60450/01	Replacement 100 mic stainless steel element
W-3195	Replacement seal kit for W-15 with paper element
W-3199	Replacement seal kit for W-15 with stainless steel element



### Unique fuel-stop filter range

When water level reaches the pre-determined level, the flow of fuel is halted. This offers a safe way to ensure water in fuel contamination doesn't reach your engine.

The internal precision machined float ensures only fuel passes; it is free to move within the filter and as the water is separated, will float on that water content collecting in the bowl.

The W-15FS range does not offer particulate filtration, hence there note being a micron rating next to the units above, however engine protection from water content is unparalleled in such a compact form.



# WASP PFS Ltd

A Separ UK Company (ISO9001:2008)  
3 Kingley Park, Station Road, Kings Langley, Herts, WD4 8GW  
www.wasp-pfs.com Tel: +44(0)1923 606600  
sales@wasp-pfs.com Fax: +44(0)1923 267463



## W-20 Range

A primary fuel filter/water separator providing protection from damaging water and particulate commonly found in diesel fuel.

### Description

WASP Fuel Filters offer a new cost effective range of primary filtration equipment for Marine, Industrial and Transport applications. The problems that can occur due to water and sediment in fuel are well known and WASP Filters offer a wide choice of options to cover most requirements. Available with either a clear plastic bowl or metal bowl and brass drain valve



#### 1. Separation:

The incoming flow of fuel oil changes velocity and direction, reducing the possibility of further reduction of any water droplets present through impact.

#### 2. Coalescence:

This takes place on and just below the flow dispersion member allowing the separated water to descend to the bottom of the filter bowl.

#### 3. Filtration:

The fuel finally passes through the stainless steel filter element. This removes all particulate above 100 micron still suspended in the fuel after the separation process.

### Features

- 3/8" BSP connection
- Plastic or metal bowls
- 120 – 200 litres per hour flow rate
- Lightweight
- Compact
- Choice of paper elements or long life stainless steel
- LM6 grade aluminium filter heads with reversible stainless steel bracket & bolts
- Powder coated aluminium filter heads for corrosion prevention & long service life
- RINA spec (ISO10088) units available



Paper filter elements are 20 micron, Steel filter elements are 150 micron stainless steel.

Water separation efficiency all models greater than 97%

RINA Certificate No. DIP/14/94 (Fire resistance test)

All metal bowl or RINA spec units meet and exceed the requirements of ISO 10088 Annex B.

### Dimensions

100 mm wide x 100 depth x 200mm tall

### Weights

W-20	Paper element clear bowl	0.54kg	Steel element clear bowl	0.80kg
W-25	Paper element metal bowl	0.65kg	Steel element metal bowl	0.91kg
W-27	Paper element Rina	1.00kg	Steel element Rina	1.11kg

# WASP PFS Ltd

A Separ UK Company (ISO9001:2008)

3 Kingley Park, Station Road, Kings Langley, Herts, WD4 8GW

www.wasp-pfs.com

Tel: +44(0)1923 606600

sales@wasp-pfs.com

Fax: +44(0)1923 267463



## W-20 range

Water Separator / Fuel Filter Range

Integrated bracket

3/8" BSP ports, Aluminium head, aluminium or clear plastic bowl.

ISO10088 versions available for marine use



### Filtration (micron)

### Details

W-20ST	15 micron paper	Clear bowl
W-20STM	15 micron paper	Metal bowl
W-25ST	150 micron stainless steel	Clear bowl
W-25STM	150 micron stainless steel	Metal bowl
W-27RP	15 micron paper	Clear bowl / metal heat shield (RINA spec)
W-27RS	150 micron stainless steel	Clear bowl / metal heat shield (RINA spec)

### W-20 range options

W-2301	Replacement seal kit
W-2302	Replacement 20 micron paper element and seal kit
W-2303	Replacement 150 micron stainless steel element only



# WASP PFS Ltd

A Separ UK Company (ISO9001:2008)  
 3 Kingley Park, Station Road, Kings Langley, Herts, WD4 8GW  
 www.wasp-pfs.com Tel: +44(0)1923 606600  
 sales@wasp-pfs.com Fax: +44(0)1923 267463



## W-30 Range

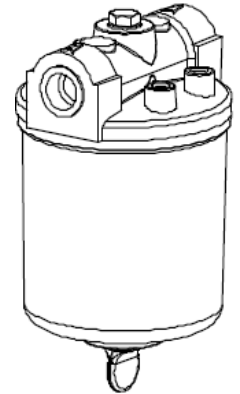
The WASP W-30 range offers cost effective fuel filtration

WASP Fuel Filters offer a new cost effective range of primary filtration equipment for marine, heating, industrial and transport applications. The problems that can occur due to water and sediment in fuel are well known and WASP Filters offer a wide choice of options to cover most requirements.

All metal bowl units meet and exceed the requirements of ISO 10088 Annex B.

### Features

- 1/4", 3/8" and 1/2" BSP connections
- Metal or plastic bowls
- Up to 300 litres per hour flow rate
- Lightweight
- Inexpensive solution
- Choice of paper elements or long life stainless steel
- LM6 grade aluminium filter heads with reversible stainless steel bracket & bolts
- Powder coated aluminium filter heads for corrosion prevention & long service life

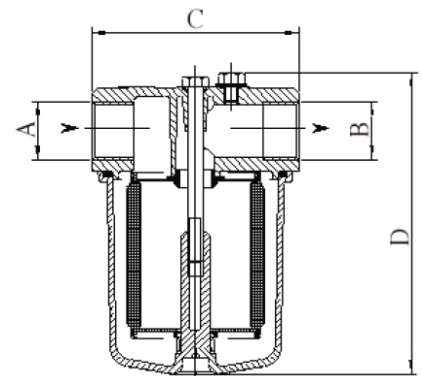


### Technical Specification

Maximum operating pressure 2bar  
 Max operating temp (metal bowl) 90°C  
 Max operating temp (plastic bowl) 50°C

Compatible with diesel and heavy oil

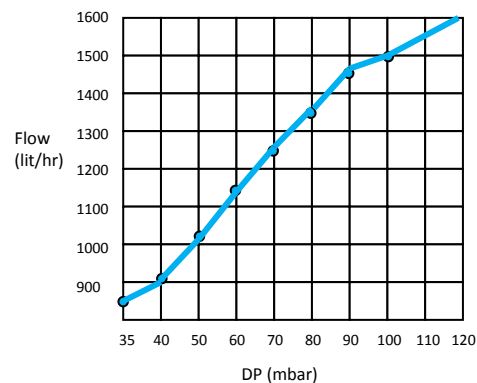
Dimensions	
A	1/4", 3/8" or 1/2" BSP
B	1/4", 3/8" or 1/2" BSP
C	81mm
D	140mm (max)



### Options (on request)

- Viton seals
- Clear bowl

Chart for diesel (1.5°E) with clean element



### Assembly, maintenance and cleaning

Carefully follow the flow direction shown by an arrow on the filter. The filter can be installed in any position although it is recommended to fit it vertically with the bowl pointing downwards in order to facilitate the separation of the water traces and the deposit of the filtered impurities. Cleaning the filter is carried out by unscrewing the central bolt and then unscrewing the bowl. Carefully wash the filtering element with clean diesel, gas-oil or gasoline. Remount the unit and check that the seals are integral and well placed. Paper elements should be replaced as they cannot be reused. Water can be drained by opening the bleed screw on the lid and then the water drain at the bottom of the bowl.

# WASP PFS Ltd

A Separ UK Company (ISO9001:2008)

3 Kingley Park, Station Road, Kings Langley, Herts, WD4 8GW

www.wasp-pfs.com

Tel: +44(0)1923 606600

sales@wasp-pfs.com

Fax: +44(0)1923 267463



## W-30 range

1/4", 3/8" or 1/2" BSP ports, Aluminium head, aluminium or clear plastic bowl.

Up to 100 litres per hour flow

Max. Operating temperature: 90° C (aluminium bowl).

Max. Operating temperature: 50° C (transparent bowl).

Sold in pack sizes of 10 pieces



### Filtration (micron)

### Details

W-30STM/14/0015P	15mic paper	1/4" Ports, Metal bowl
W-30STM/14/006	60mic stainless steel	1/4" Ports, Metal bowl
W-30STM/14/01	100mic stainless steel	1/4" Ports, Metal bowl
W-30STM/14/03	300mic galvanised steel	1/4" Ports, Metal bowl
W-30ST/14/0015P	15mic paper	1/4" Ports, Clear bowl
W-30ST/14/006	60mic stainless steel	1/4" Ports, Clear bowl
W-30ST/14/01	100mic stainless steel	1/4" Ports, Clear bowl
W-30ST/14/03	300mic galvanised steel	1/4" Ports, Clear bowl
W-30STM/38/0015P	15mic paper	3/8" Ports, Metal bowl
W-30STM/38/006	60mic stainless steel	3/8" Ports, Metal bowl
W-30STM/38/01	100mic stainless steel	3/8" Ports, Metal bowl
W-30STM/38/03	300mic galvanised steel	3/8" Ports, Metal bowl
W-30ST/38/0015P	15mic paper	3/8" Ports, Clear bowl
W-30ST/38/006	60mic stainless steel	3/8" Ports, Clear bowl
W-30ST/38/01	100mic stainless steel	3/8" Ports, Clear bowl
W-30ST/38/03	300mic galvanised steel	3/8" Ports, Clear bowl
W-30STM/12/0015P	15mic paper	1/2" Ports, Metal bowl
W-30STM/12/006	60mic stainless steel	1/2" Ports, Metal bowl
W-30STM/12/01	100mic stainless steel	1/2" Ports, Metal bowl
W-30STM/12/03	300mic galvanised steel	1/2" Ports, Metal bowl
W-30ST/12/0015P	15mic paper	1/2" Ports, Clear bowl
W-30ST/12/006	60mic stainless steel	1/2" Ports, Clear bowl
W-30ST/12/01	100mic stainless steel	1/2" Ports, Clear bowl
W-30ST/12/03	300mic galvanised steel	1/2" Ports, Clear bowl

### W-30 range options

W-70358	W-30 range mounting bracket and screw
W-60200/0015P	Replacement 15 mic paper element
W-602000/006	Replacement 60 mic pleated stainless steel element
W-60200/01	Replacement 100 mic pleated stainless steel element
W-60200/03	Replacement 300 mic pleated galvanised steel element
W-3203	Gasket kit
W-3203V	Viton Gasket kit



# WASP PFS Ltd

A Separ UK Company (ISO9001:2008)

3 Kingley Park, Station Road, Kings Langley, Herts, WD4 8GW

www.wasp-pfs.com

Tel: +44(0)1923 606600

sales@wasp-pfs.com

Fax: +44(0)1923 267463



## W-7010x Range

The WASP W-7010x range offers high flow cost effective fuel filtration

WASP Fuel Filters offer a new cost effective range of primary filtration equipment for marine, heating, industrial and transport applications. The problems that can occur due to water and sediment in fuel are well known and WASP Filters offer a wide choice of options to cover most requirements.

Metal bowl units meet and exceed the requirements of ISO 10088 Annex B.

### Features

- 1/2", 3/4" and 1" BSP connections
- Metal bowls
- Up to 3000 litres per hour flow rate
- Lightweight
- Inexpensive solution
- Long life stainless steel elements
- LM6 grade aluminium filter heads with reversible stainless steel bracket & bolts
- Powder coated aluminium filter heads for corrosion prevention & long service life

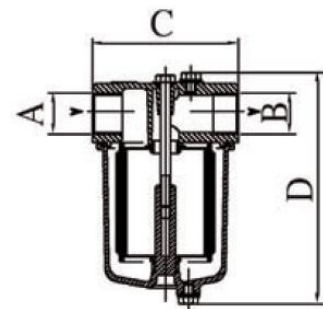
### Technical Specification

Maximum operating pressure 2bar

Max operating temp (metal bowl) 90°C

Compatible with diesel and heavy oil

Dimensions	
A	1/2", 3/4" or 1" BSP
B	1/2", 3/4" or 1" BSP
C	120mm
D	175mm



### Options (on request)

- Wall mounting bracket
- Viton seals
- Heated version available on request
- Magnetic filter available on request

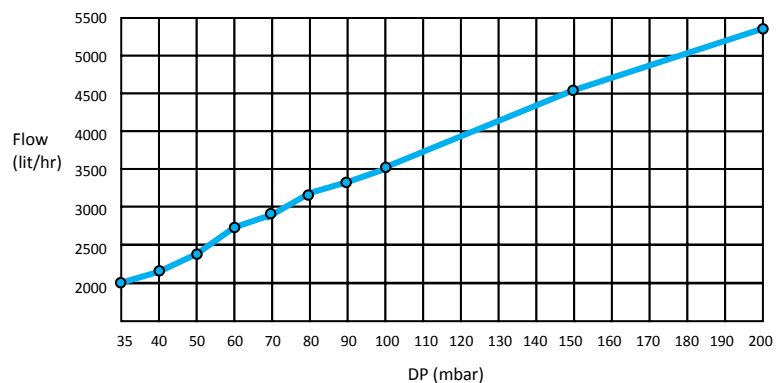


Chart for diesel (1.5°E) with clean element

### Assembly, maintenance and cleaning

Carefully follow the flow direction shown by an arrow on the filter. The filter can be installed in any position although it is recommended to fit it vertically with the bowl pointing downwards in order to facilitate the separation of the water traces and the deposit of the filtered impurities. Cleaning the filter is carried out by unscrewing the central bolt and then unscrewing the bowl. Carefully wash the filtering element with clean diesel, gas-oil or gasoline. Remount the unit and check that the seals are integral and well placed. Paper elements should be replaced as they cannot be reused. Water can be drained by opening the bleed screw on the lid and then the water drain at the bottom of the bowl.

# WASP PFS Ltd

A Separ UK Company (ISO9001:2008)

3 Kingley Park, Station Road, Kings Langley, Herts, WD4 8GW

www.wasp-pfs.com

Tel: +44(0)1923 606600

sales@wasp-pfs.com

Fax: +44(0)1923 267463



## W-7010x range

1/2", 3/4" and 1" BSP ports  
Aluminium head, aluminium bowl.  
Up to 3000 litres per hour flow, 4 bar pressure  
Max. Operating temperature: 90° C



### Filtration (micron)

### Details

W-70107/006	60mic stainless steel	1/2" Ports, Metal bowl
W-70107/01	100mic stainless steel	1/2" Ports, Metal bowl
W-70107/03	300mic galvanised steel	1/2" Ports, Metal bowl
W-70104/006	60mic stainless steel	3/4" Ports, Metal bowl
W-70104/01	100mic stainless steel	3/4" Ports, Metal bowl
W-70104/03	300mic galvanised steel	3/4" Ports, Metal bowl
W-70101/006	60mic stainless steel	1" Ports, Metal Bowl
W-70101/01	100mic stainless steel	1" Ports, Metal Bowl
W-70101/03	300mic galvanised steel	1" Ports, Metal Bowl

### W-7010x range options

W-FS13	W-7010x range mounting bracket
W-60100/006	Replacement 60 mic pleated stainless steel element
W-60100/01	Replacement 100 mic pleated stainless steel element
W-60100/03	Replacement 300 mic pleated galvanised steel element
W-3207	Gasket kit
W-3207V	Viton Gasket kit



# WASP PFS Ltd

A Separ UK Company (ISO9001:2008)

3 Kingley Park, Station Road, Kings Langley, Herts, WD4 8GW

www.wasp-pfs.com

Tel: +44(0)1923 606600

sales@wasp-pfs.com

Fax: +44(0)1923 267463



## W-7050x Range

The WASP W-7050x range offers high flow cost effective fuel filtration

WASP Fuel Filters offer a new cost effective range of primary filtration equipment for marine, heating, industrial and transport applications. The problems that can occur due to water and sediment in fuel are well known and WASP Filters offer a wide choice of options to cover most requirements.

Metal bowl units meet and exceed the requirements of ISO 10088 Annex B.

### Features

- 1", 1 1/4", 1 1/2" and 2" BSP connections
- Metal bowls
- Up to 8000 litres per hour flow rate with modest DP figures (see below)
- Lightweight
- Inexpensive solution
- Long life stainless steel elements
- LM6 grade aluminium filter heads with reversible stainless steel bracket & bolts
- Powder coated aluminium filter heads for corrosion prevention & long service life

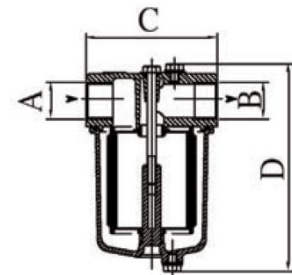
### Technical Specification

Maximum operating pressure 2bar

Max operating temp (metal bowl) 90°C

Compatible with diesel and heavy oil

Dimensions	
A	1/2", 3/4" or 1" BSP
B	1/2", 3/4" or 1" BSP
C	120mm
D	175mm



### Options (on request)

- Wall mounting bracket
- Viton seals
- Heated version available on request
- Magnetic filter available on request

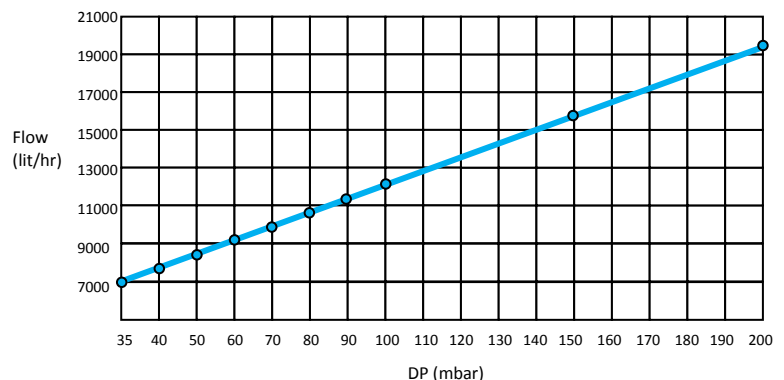


Chart for diesel (1.5°E) with clean element

### Assembly, maintenance and cleaning

Carefully follow the flow direction shown by an arrow on the filter. The filter can be installed in any position although it is recommended to fit it vertically with the bowl pointing downwards in order to facilitate the separation of the water traces and the deposit of the filtered impurities. Cleaning the filter is carried out by unscrewing the central bolt and then unscrewing the bowl. Carefully wash the filtering element with clean diesel, gas-oil or gasoline. Remount the unit and check that the seals are integral and well placed. Paper elements should be replaced as they cannot be reused. Water can be drained by opening the bleed screw on the lid and then the water drain at the bottom of the bowl.

# WASP PFS Ltd

A Separ UK Company (ISO9001:2008)

3 Kingley Park, Station Road, Kings Langley, Herts, WD4 8GW

www.wasp-pfs.com

Tel: +44(0)1923 606600

sales@wasp-pfs.com

Fax: +44(0)1923 267463



## W-7050x range

1", 1 ¼", 1 ½" and 2" BSP ports, Aluminium head, aluminium bowl.  
Up to 8000 litres per hour flow, 4 bar pressure  
Max. Operating temperature: 90° C



### Filtration (micron)

### Details

W-70501/006	60mic stainless steel	1" Ports, Metal bowl
W-70501/01	100mic stainless steel	1" Ports, Metal bowl
W-70501/03	300mic galvanised steel	1" Ports, Metal bowl
W-70502/006	60mic stainless steel	1 ¼" Ports, Metal bowl
W-70502/01	100mic stainless steel	1 ¼" Ports, Metal bowl
W-70502/03	300mic galvanised steel	1 ¼" Ports, Metal bowl
W-70503/006	60mic stainless steel	1 ½" Ports, Metal Bowl
W-70503/01	100mic stainless steel	1 ½" Ports, Metal Bowl
W-70503/03	300mic galvanised steel	1 ½" Ports, Metal Bowl
W-70504/006	60mic stainless steel	2" Ports, Metal Bowl
W-70504/01	100mic stainless steel	2" Ports, Metal Bowl
W-70504/03	300mic galvanised steel	2" Ports, Metal Bowl

### W-70501-02-03 range options

W-70500B	W-7050x range mounting bracket
W-60500/006	Replacement 60 mic pleated stainless steel element
W-60500/01	Replacement 100 mic pleated stainless steel element
W-60500/03	Replacement 300 mic pleated galvanised steel element
W-3197	Gasket kit
W-3197V	Viton Gasket kit



### W-70504 range options

W-70500B	W-7050x range mounting bracket
W-60504/006	Replacement 60 mic pleated stainless steel element
W-60504/01	Replacement 100 mic pleated stainless steel element
W-60504/03	Replacement 300 mic pleated galvanised steel element
W-3197	Gasket kit
W-3197V	Viton Gasket kit



# WASP PFS Ltd

A Separ UK Company (ISO9001:2008)

3 Kingley Park, Station Road, Kings Langley, Herts, WD4 8GW

www.wasp-pfs.com

Tel: +44(0)1923 606600

sales@wasp-pfs.com

Fax: +44(0)1923 267463



## W-7070x Range

The WASP W-7070x range offers high flow, high efficiency, high performance and above all reliability.

WASP Fuel Filters offer a new cost effective range of primary filtration equipment for marine, heating, industrial and transport applications. The problems that can occur due to water and sediment in fuel are well known and WASP Filters offer a wide choice of options to cover most requirements. All units meet and exceed the requirements of ISO 10088 Annex B.

### Features

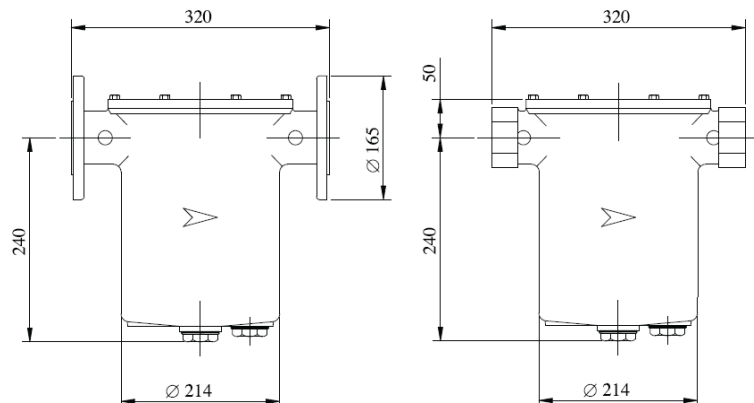
- 2" BSP connections
- Screw thread of flanged options
- Metal bowls
- Up to 20,000 litres per hour flow rate with modest DP figures (see below)
- ¼" plug for air bleed
- 1 ¼" water/sediment drain on underside
- ¼" input and output pressure monitoring ports (plugged when supplied)
- Long life stainless steel elements
- LM6 grade aluminium filter heads with reversible stainless steel bracket & bolts

### Technical Specification

Maximum operating pressure 4bar

Max operating temp (metal bowl) 90°C

Compatible with diesel and heavy oil



### Options (on request)

- Wall mounting bracket
- Viton seals
- Heated version available on request
- Magnetic filter available on request

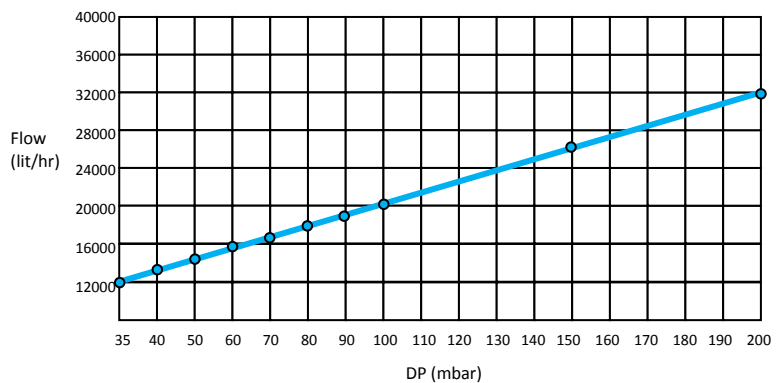


Chart for diesel (1.5°E) with clean element

### Assembly, maintenance and cleaning

Carefully follow the flow direction shown by an arrow on the filter. The filter can be installed in any position although it is recommended to fit it vertically with the bowl pointing downwards in order to facilitate the separation of the water traces and the deposit of the filtered impurities. Cleaning the filter is carried out by unscrewing the central bolt and then unscrewing the bowl. Carefully wash the filtering element with clean diesel, gas-oil or gasoline. Remount the unit and check that the seals are integral and well placed. Paper elements should be replaced as they cannot be reused. Water can be drained by opening the bleed screw on the lid and then the water drain at the bottom of the bowl.

# WASP PFS Ltd

A Separ UK Company (ISO9001:2008)

3 Kingley Park, Station Road, Kings Langley, Herts, WD4 8GW

www.wasp-pfs.com

Tel: +44(0)1923 606600

sales@wasp-pfs.com

Fax: +44(0)1923 267463



## W-70700 range

2" BSP ports, Aluminium head, aluminium bowl.  
Up to 20,000 litres per hour flow, 4 bar pressure  
Max. Operating temperature: 90° C



### Filtration (micron)

### Details

	Filtration (micron)	Details
W-70700/006	60mic stainless steel	2" Ports, Metal bowl
W-70700/01	100mic stainless steel	2" Ports, Metal bowl
W-70700/03	300mic galvanised steel	2" Ports, Metal bowl

## W-70700F range

DN.50 Pn16 flange, Aluminium head, aluminium bowl.  
Up to 20,000 litres per hour flow, 4 bar pressure  
Max. Operating temperature: 90° C



### Filtration (micron)

### Details

	Filtration (micron)	Details
W-70700/006F	60mic stainless steel	DN.50 Pn16 flange, Metal bowl
W-70700/01F	100mic stainless steel	DN.50 Pn16 flange, Metal bowl
W-70700/03F	300mic galvanised steel	DN.50 Pn16 flange, Metal bowl

### W-70700 and W-70700F options

W-70700B	W-70700 range mounting bracket
W-60500/006	Replacement 60 mic pleated stainless steel element
W-60500/01	Replacement 100 mic pleated stainless steel element
W-60500/03	Replacement 300 mic pleated galvanised steel element
W-3196	Gasket kit
W-3196V	Viton Gasket kit



# WASP PFS Ltd

A Separ UK Company (ISO9001:2008)

3 Kingley Park, Station Road, Kings Langley, Herts, WD4 8GW

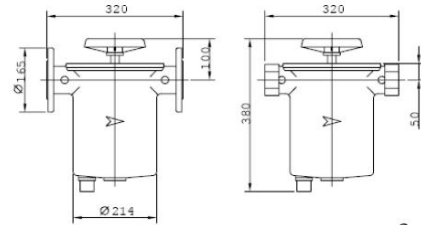
www.wasp-pfs.com Tel: +44(0)1923 606600

sales@wasp-pfs.com Fax: +44(0)1923 267463

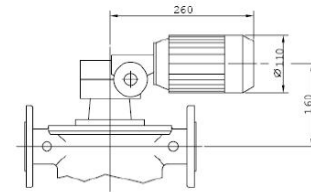


## W-51000 Self Cleaning Range

The main design benefit of the self-clean filter range is that it can be serviced without being disassembled. The flow of fluid through the unit is not interrupted and consequently neither is the operation of the system/engine it is filtering for. To clean the filter, simply twist the handle at the top of the unit – this process can be manual or automatic (motorised using a variable speed drive). This automatic system can then be controlled by a timer; or for fully automatic operation by a pressure switch mounted on the output side filter. This would then trigger cleaning due to excessive pressure loss caused by a dirty filter.



Overall Dimensions (mm)



### TECHNICAL SPECIFICATIONS

<b>Connection type W-51000</b>	Threaded <b>2"</b> UNI-ISO 7/1	<b>Fuel</b>	Diesel oil and heavy oil
<b>Connection type W-51000F</b>	Flanged <b>DN50</b> Pn16 ISO 7005/	<b>Filtering degree</b>	250 - 1000µm (others on request)
<b>Max operating pressure</b>	4 bar	<b>Drain plugs</b>	Rp 1"1/4 (gal steel)
<b>Max operating temperature</b>	120°C	<b>Pipe pressure plugs</b>	Rp 1/4" (brass)

### MATERIAL

Aluminium filter body and cover, filter elements in carbon steel, brass control shaft bushing, viton sealing o-ring, control and check shaft of the scraper in steel, hand-wheel for the filtering element cleaning out of plastic anti-shock material.

250 micron					Viscosity °E	500 micron				
Pressure Loss Δp (mbar)						Pressure Loss Δp (mbar)				
15	30	60	150	300		15	30	60	150	300
2500	4900	9000	18000	25000	3 ÷ 7	3500	6700	12500	21000	29000
1750	3500	6500	14000	20000	8 ÷ 15	3000	6000	11000	19500	27000
1150	2300	41000	10000	15400	16 ÷ 25	2500	5000	9000	17000	24800
900	1700	3150	8300	12800	26 ÷ 40	2100	4000	7500	15600	23000
650	1200	2250	5600	8600	41 ÷ 60	1700	3200	6000	12600	19800
500	964	1700	4300	7000	61 ÷ 80	1400	2700	5000	11500	18000

### OPTIONS

- Installation of one or two 300W heating elements (230V/50Hz - IP65).
  - Temperature range: 0 to 90°C.
  - Fixed limited temperature: 100°C.
  - Electrical insulation: IP40
- Filter elements manufactured in 304 stainless steel.
- Electric reducer for cleaning to the filtering unit.
  - Rotation speed: 1 RPM
  - Power consumption: 90 W
  - Electrical insulation: IP54
  - Torque: 50 Nm
  - Type of motor: connection for single or three phase
  - An intermittent cycle is recommended for longer filtering life

### INSTALLATION NOTES

- **Make sure** that the fluids are compatible with the filter material.
- **Follow** the flow direction according to the arrow printed on the filter.
- **Make certain** that the input/output piping is aligned and that there are no obstacles or restrictions inside.
- **Install** the filter on a hard surface and avoid soft materials such as plastered walls.
- **Install** the filter with the cleaning handle (flywheel) turned upwards.
- **We recommend** installing a bleeding valve in the closed circuit to avoid overpressure due to the fuel temperature variations.

# WASP PFS Ltd

A Separ UK Company (ISO9001:2008)

3 Kingley Park, Station Road, Kings Langley, Herts, WD4 8GW

www.wasp-pfs.com Tel: +44(0)1923 606600

sales@wasp-pfs.com Fax: +44(0)1923 267463



## W-51000 range

2" BSP ports, Aluminium head, aluminium bowl.  
Up to 20,000 litres per hour flow, 4 bar pressure  
Max. Operating temperature: 90° C



### Filtration (micron)

### Details

W-51000/1	1000 micron (1mm)	2" Ports, Metal bowl
W-51000/075	750 micron	2" Ports, Metal bowl
W-51000/05	500 micron	2" Ports, Metal bowl
W-51000/025	250 micron	2" Ports, Metal bowl
W-51000/1F	1000 micron (1mm)	2" Ports, Metal bowl, Flanged
W-51000/075F	750 micron	2" Ports, Metal bowl, Flanged
W-51000/05F	500 micron	2" Ports, Metal bowl, Flanged
W-51000/025F	250 micron	2" Ports, Metal bowl, Flanged

Other sizes are available in the self clean range, from 1/2" ports to 2" ports - please ask for details.

# WASP PFS Ltd

A Separ UK Company (ISO9001:2008)  
 3 Kingley Park, Station Road, Kings Langley, Herts, WD4 8GW  
 www.wasp-pfs.com Tel: +44(0)1923 606600  
 sales@wasp-pfs.com Fax: +44(0)1923 267463



## WASP Spin-On Range of Fuel Filters / Water Separators

The WASP spin on filter range is a cost effective method of extracting contaminate from fuel. The filters range from a rated flow of 11 litres per minute upwards and can be supplied with paper filters for staining or glass filters for emulsified water removal. For fine cleaning, the range also offers a 3 micron straining filter and head with a high flow rate.

In heavy-duty filtration, the efficiency of the filter is the key to protecting the engine. Analysis of fuel from heavy-duty diesel engines has shown that about 90% of the particles that can harm an engine have a size between 5 and 15 Micron.

Unequaled by any traditional filter media, WASP spin on filters performs at least twice as efficiently as cellulose and delivers almost 100% filtration efficiency for this range of particles. While other filter medias are made of cellulose or glass fibres, the WASP emulsified water removal system is a composite of bonded layers of synthetic filter media.

While the individual fibre diameters of cellulose range from 12 to 60 microns, the WASP polymeric fibres range from less than 1 to 10 microns. This polymer filter media is less restrictive and delivers a much finer filtration. Each layer is developed to provide optimum pore size distribution so that the composite medium meets the specific filtration requirements of the application. This provides unique advantages that a traditional filter media simply cannot offer and fully meets or exceeds injection pump manufacturer's requirements.

As an example of this, the W-1013-680 fitted on a W-330236S filter head is rated at 680lph and is 98.7% efficient at 10 mic, and 83% efficient at 5 mic. It will remove a minimum of 95% of both free and emulsified water.

Head	Port Size	Notes	Flow	Element	Mic rating	Notes
W-3302367S	7/8"-14UNF	Single Head, 2 port, 3 mounting holes	11.5lit/min (680 lit/hr)	W-1202/680	20 mic	Paper strainer
				W-1216/680	20 mic	Water separation
				W-1013/680	10 mic	Emulsified water removal
W-13904380	1 1/4" BSP	Single Head, 2 port, 3 mounting holes	100 lit/min (6000 lit/hr)	W-16776/6000	3 mic	Paper strainer
				W-16778/6000	10 mic	Paper strainer
				W-16780/6000	12 mic	Paper strainer
				W-16721/6000	30 mic	Paper strainer
				W11285	10 mic approx	Water stop/absorption filter
W-139800MR	Pressure gauge (0-6 bar) for W-13904380 head above					

However these units, whilst they can be sold individually, are also available as packages. For example, the following page show the W-3302367s and W-1013/680 combined, with some additional input and output fittings to produce the W-EWR-34BSP/680 (WASP Emulsified Water Removal unit).

Alternatively, you can combine the W-13904380 head with the W-16776/6000 element to produce a 100 lit/min 3 micron final filtration stage.

Such combinations or adaptations, like placing two units in parallel on a manifold to double the flow, are a very effective way to produce the unit you require. Please call us for more details.

## Water removal and filtration range

### Part numbers

W-13904380	1.25" BSP 2 port head, 1.75bar bypass
W-11285 (R)	Water absorption media filter / water stop fuel filter
W-16776/6000 (R)	3 micron fine filter
W-16778/6000 (R)	10 micron filter
W-16780/6000 (R)	12 micron filter
W-16721/6000 (R)	30 micron filter

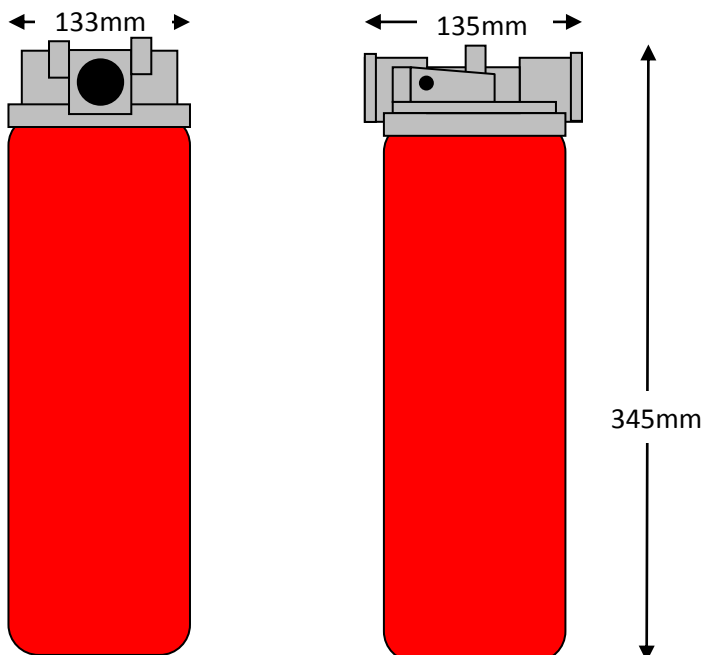
### Overview

Low cost, high performance diesel/MDO fuel filter/water separator. For fuel flow rates up to 6000 litres per hour (100 litres per minute)

### Specification

Flow rate	6000 lit/hr
Micron	as above
Type	Water absorption or absolute filtration
Head Port size	1.25" BSP female
Head by-pass	1.75bar bypass built in (element service point)
Head mounting holes:	2x M8x1.25 female
Optional gauge:	0-30PSI / 0-2Bar pressure gauge, part number W-139800MR (screws to 1/8" BSP port on head side)

### Dimensions (approximate)



Please allow 40mm (min) below for element change



# WASP PFS Ltd

A Separ UK Company (ISO9001:2008)  
3 Kingley Park, Station Road, Kings Langley, Herts, WD4 8GW  
www.wasp-pfs.com      Tel: +44(0)1923 606600  
sales@wasp-pfs.com      Fax: +44(0)1923 267463



## Water removal and filtration range

### Part number

W-EWR-34BSP/680      3/4" BSP male ports (option for female)

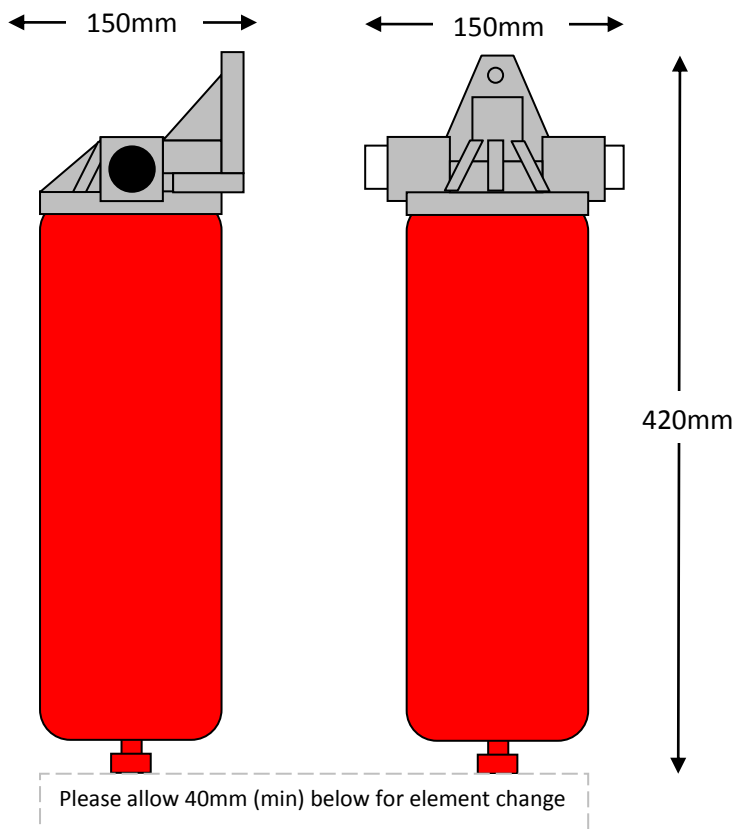
### Overview

Low cost, high performance diesel/MDO fuel filter/water separator.  
For fuel flow rates up to 300 litres per hour  
Free and emulsified water removal  
Integrated metal water drain

### Specification

Flow rate	300 lit/hr
Micron	10 micron
Type	Water removal (both free and emulsified) c/w water drain valve
Port size	W-EWR-34BSP-680      3/4" BSP male
Replacement element	W-1013/680

### Dimensions (approximate)



# WASP PFS Ltd

A Separ UK Company (ISO9001:2008)

3 Kingley Park, Station Road, Kings Langley, Herts, WD4 8GW

www.wasp-pfs.com      Tel: +44(0)1923 606600

sales@wasp-pfs.com      Fax: +44(0)1923 267463



## Ordering procedure

Ordering from WASP PFS Ltd is easy, simply make a note of the products you are interested in and either:

- Call us on 01923 276007,
- Email us via [sales@wasp-pfs.com](mailto:sales@wasp-pfs.com),
- Send a message to us via the 'contact us' section on our web site ([www.wasp-pfs.co.uk](http://www.wasp-pfs.co.uk))
- You can fax us at 01923 267463,
- You can even post orders to us at: WASP PFS Ltd, 3 Kingley Park, Station Road, Kings Langley, Herts, WD4 8GW

If you need help, please call us. We are very happy to help select products for you, assist with technical advice and provide further product data if required.

## Payments

We accept payment by bank transfer (BACS, CHAPS, Internet banking and bank transfers). We also accept cheques made payable to "WASP PFS Ltd".

We will shortly be taking credit card payments as well, please check back with us soon for more details.

WASP PFS Ltd

A Separ UK Company (ISO9001:2008)

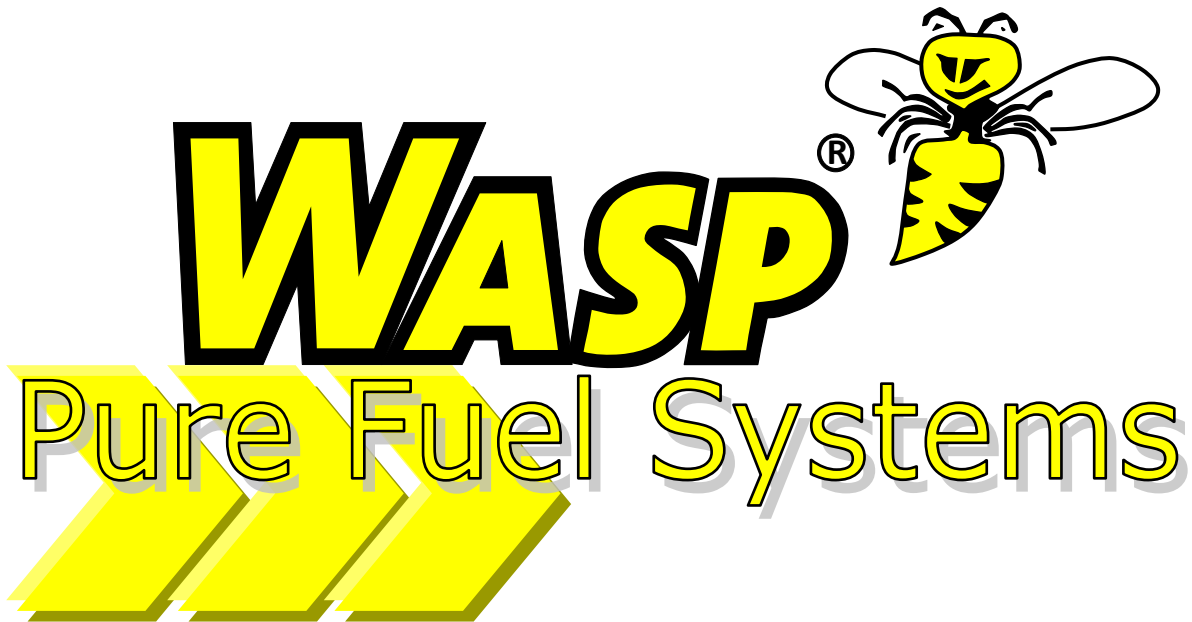
3 Kingley Park, Station Road, Kings Langley, Herts, WD4 8GW

www.wasp-pfs.com

Tel: +44(0)1923 606600

sales@wasp-pfs.com

Fax: +44(0)1923 267463



Fuel Filtration  
Fuel Polishing Systems  
Fuel Additives  
Fuel Pumps  
Oil Change Systems